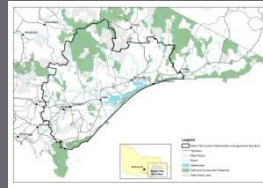




# JOINT LAND MANAGEMENT: FROM CONCEPT TO PRACTICE - THE GUNAIKURNAI EXPERIENCE



# Gunaikurnai Land and Waters Aboriginal Corporation



Roger Fenwick – GLaWAC CEO



# GKTOLMB JM Highlights and learnings



Marianne Atkinson- GKTOLMB Board member



# Victorian Government JM Highlights and learnings



WEDNESDAY, AUGUST 10, 2016 | LAKES POST

## Local forum strengthens joint management

In 2010, the first Recognition and Settlement Agreement between the Victorian Government and Traditional Owners was signed. A key element of the agreement, with the consent of Traditional Owners, was the provision for joint management of 19 parks and reserves across the region, as it's appropriate that an Aboriginal forum on joint management was held recently at Lakes Entrance.

Over 50 people from the Department of Environment, Land, Water and Planning (DELWP), Parks Victoria, the GunaiKurnai Land and Waters Aboriginal Corporation (GLWAC) and the GunaiKurnai Traditional Owners Land Management Board gathered to talk about joint management, what it means for the work they do, the groups do it and the relationships they need to have to do it well as partners working together.

"It's early days yet, joint management planning can be a challenge and can take years," Mr Rowland said. "It's about experimenting and learning from mistakes as we go along."

"This is an opportunity to share what we're doing, what works and what we could do better, so that others can benefit along the way."

"Encourage everyone to be open, share their experience and think about the future and successful outcomes for the GunaiKurnai people. The substance from the session affirms that it will be a process across the state."

James Brown, acting chief executive officer for GLWAC, added "The On Country Team takes great pride in their joint working after hard, being on country every day and sharing knowledge to work better together."

"The team continues to be successful in strengthening partnerships with DELWP and Parks Victoria which ensures a sustainable future."

**Local forum on joint management was recently held in Lakes Entrance to help foster and strengthen ties between various indigenous and environmental agencies in the region.**



David Lucas – Parks Victoria

# GLaWAC JM Highlights and learnings, and our JM future



People



Culture



Working Together



Country

Brian Stevens – GLaWAC Board Chair

