

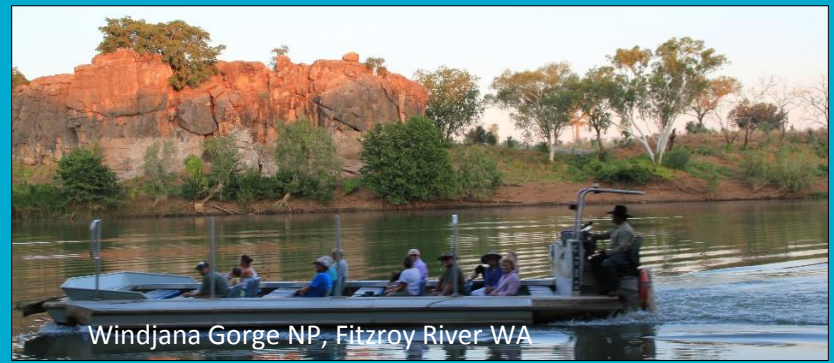
Laynhapuy IPA, Arnhem Land, NT



Gogo Station, Fitzroy River WA



Peedamulla Station, WA



Windjana Gorge NP, Fitzroy River WA

# Building co-existence through diversifying Indigenous livelihoods on country: current research and future prospects

Marcus Barber and Cathy Robinson

National Native Title Conference, Broome

June 7, 2018

LAND AND WATER

[www.csiro.au](http://www.csiro.au)



# Presentation outline

- Diversifying Indigenous livelihoods
- Examples of 4 CSIRO Land and Water research projects
  - Building value for existing programs
  - Investigating new livelihood options
  - Engaging large-scale development initiatives
  - Supporting new enterprise development
- Conclusion: partnerships and pathways



Indigenous fire management



Nguddaboolgan, Mitchell River, Qld

# Diversifying Indigenous Livelihoods

- Indigenous people as leaders and co-investors
- Unique set of resources - location, country, culture
- Challenges for remote/regional economic participation
  - Skills
  - Costs
  - Information gaps
- Much land and/or natural resource rights recently returned
- Options still being understood/explored
- Openness to deeper, diversified, longer term solutions

# Generating Indigenous-led understanding

- Free, prior, and informed consent
- Research agreements and MOUs between researchers and local partners
- Ground specific project efforts in understanding of local
  - People
  - Country
  - Culture
  - Governance



Understanding local capability at Kalan Enterprises

Southern Kaantju Traditional Owner workshop

# Project 1: Building value for existing programs

# Project 1: Building value for existing programs

- Past project - multiple benefits of Indigenous Cultural and Natural Resource Management (ICNRM)
- Supports new National Environmental Science Project (NESP) focused on what non-government investors want from ICNRM
- Investors means corporate, philanthropic and Indigenous
- Complements DPMC and Bush Heritage partner projects

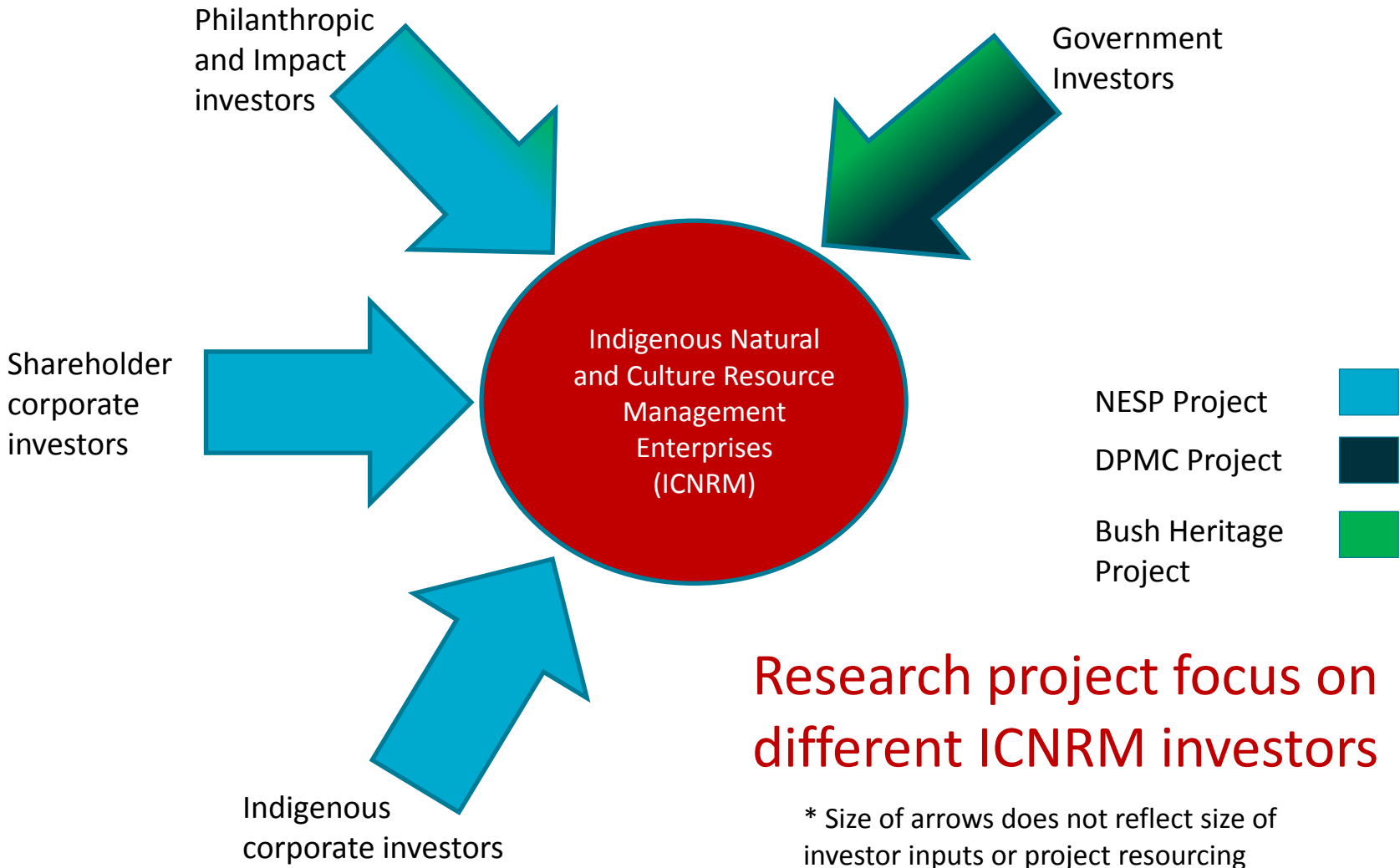


Yirralka Rangers on sea patrol



Teddy Bernard from Kowanyama presents boomerang to UN official in New York.  
Photo: KALNRMO

# Project 1: Building value for existing programs



# Project 2: Investigating new livelihood options



# Project 2: Investigating new livelihood options

- Many Cape York rivers flow east into the northern Great Barrier Reef
- Water quality is key to Reef health
- Cape has a young and rapidly growing Indigenous population
- Cape needs new livelihood options
- Partnership with Kalan Enterprises focused on providing Indigenous environmental services



Great Barrier Reef Coastline, Eastern Cape York



Coral bleaching

# Project 2: Investigating new livelihood options

- Income from the combination of Cape Indigenous ownership and demand for Reef water quality?
- Create multi-benefit 'Ecosystem Services' that can attract investors supporting:
  - Reef health
  - Indigenous livelihoods and cultures
- Aids understanding of development tradeoffs



Mcllwraith  
Range  
Cape York



Dion Creek, Kalan Enterprises, talks with  
CSIRO staff).

# Project 2: Investigating new livelihood options

- Communication to gain acceptance for new possibilities
- ‘Water is our life’ - Barber and Creek (2017)



‘Water is our life’ film shoot co-ordinated by Kalan Enterprises

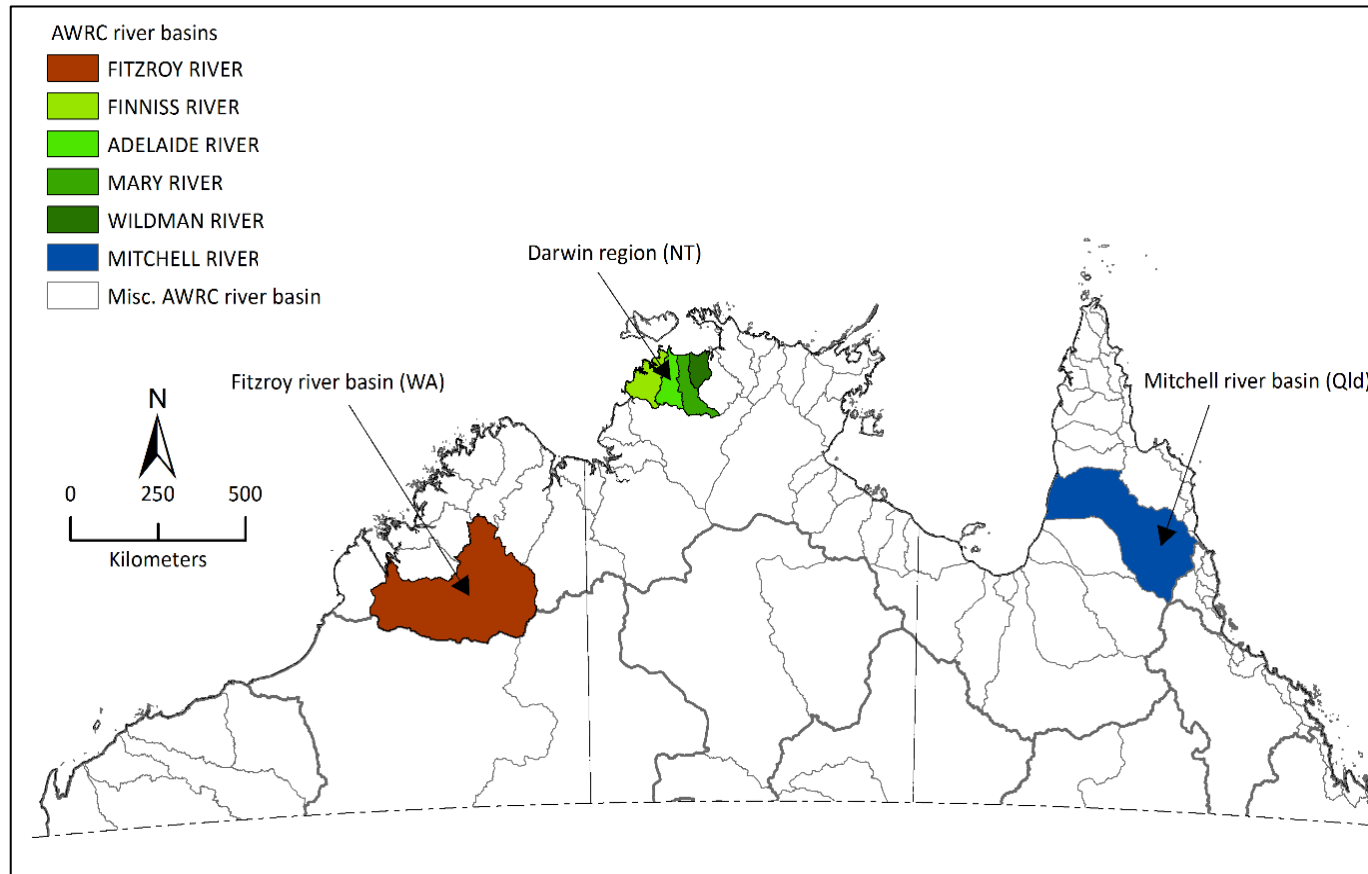
<https://www.csiro.au/en/Research/LWF/Areas/Ecosystems-biodiversity/Managing-landscapes-for-biodiversity/Indigenous-NRM/GBR-ecosystem-services>



# Project 3: Engaging large scale development

# Project 3: Engaging large-scale development

- North Australian Water Resource Assessment (NAWRA) 2016-2018
- Water and irrigated agricultural development options in the Mitchell River (Qld), Darwin region (NT), and Fitzroy River (WA)



# Project 3: Engaging big development

- NAWRA goal: better information for government, developers, and communities about future water development options:
  - Water and soil surveys
  - Water storage and farming development options
  - Crops and business costs
  - Environmental and cultural impacts
  - Indigenous values, rights and interests
  - Impacts from multiple developments

Mitchell River, Cape York, QLD



Camballin Weir, Fitzroy River, WA



Howard Springs, NT



# Project 3: Engaging big development

- Indigenous subproject also about Traditional Owners
  - scoping development objectives
  - understanding policy tools (e.g. water plans)
- NAWRA is at the catchment scale
- Work needed to assist Traditional Owners at the property scale



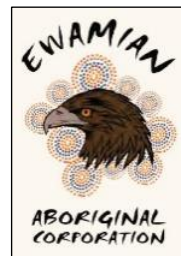
NAWRA  
Indigenous  
water  
workshop,  
Chillagoe,  
August 2017

# Project 4: Supporting on-country enterprise development



# Project 4: supporting on-country enterprise development

- 3 Year project funded by DPMC
- CSIRO and Indigenous partners:
  - National Native Title Council (NNTC)
  - North Queensland Land Council
- Local partners:
  - Nguddaboolgan and Ewamian PBCs
  - Ashburton Aboriginal Corporation
- Focused on areas where CSIRO has done major water assessments (NAWRA, FGARA, PWRA)



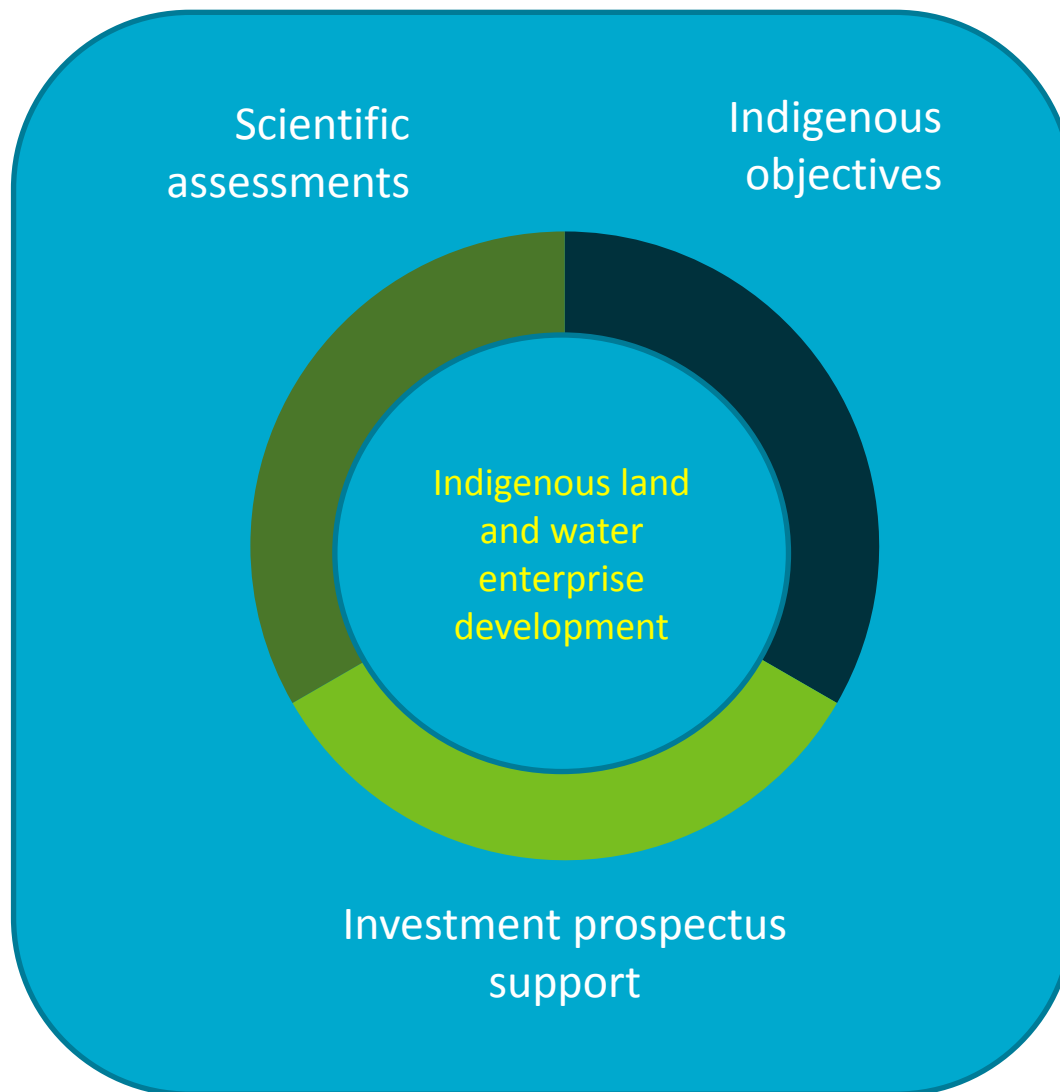
## Project 4: supporting on-country enterprise development

- Economic and scientific mapping of Indigenous natural and cultural assets to build:
  - Indigenous corporate information and skills
  - Ideas for land/enterprise options
  - Business plans and investor information documents
  - Examples and lessons for other groups elsewhere

Asset mapping with  
senior custodian  
Trevor Parker at  
Peedamulla Station,  
Pilbara, WA



# Project 4: supporting on-country enterprise development



# Conclusion: livelihood partnerships and pathways

# Livelihood research partnerships

- Meet diverse research needs – timeframes and scales
- Manage differences between:
  - Scientific research disciplines
  - Researcher and community knowledges
- Handle increased constraints on research and Indigenous institutions
- Adapt to contested and changing policy environment
- Pressure on research for ‘impact’ – outcomes beyond the research community itself
- Indigenous-led and co-research approaches are crucial to the project and partnership ‘mix’

# Future livelihood pathways

- Indigenous Australia encourages particular livelihood and enterprise models
  - Sustainability over the very long term
  - Sharing the benefits
  - Emphasise wider social and cultural outcomes
  - Emphasise skill and capability development for young people
  - Need new income streams - ‘asset-rich but income-poor’



Kalan Enterprises wetland monitoring QLD



Asset mapping, Peedamulla Station, WA

# Future livelihood pathways

- CSIRO research supporting diverse livelihoods from unique assets
- Indigenous engagement in new industries
  - Environmental and cultural services
  - Aquaculture
  - Energy
  - Agriculture
- Livelihoods that combine ‘what works’ with imaging new futures

Jundaru Aboriginal Corporation at  
Peedamulla Station



Yirralka Rangers, ‘Let’s Care For This Country’

<https://vimeo.com/133308877>



Ewamian cultural heritage, Talaroo Station QLD



# Thank You

## Key Contacts:

Marcus Barber

CSIRO Brisbane

t +61 7 3833 5519

m 0407 867 445

e [Marcus.Barber@csiro.au](mailto:Marcus.Barber@csiro.au)

Cathy Robinson

CSIRO Brisbane

t +61 7 3833 5742

e [Cathy.Robinson@csiro.au](mailto:Cathy.Robinson@csiro.au)

