



## KRED Enterprises Aboriginal Charitable Trust

Walk in two worlds

# Lifting the Bar

## Benchmark Agreement Making in the Kimberley

Port Douglas  
17 June 2015

# The Spear and the Shield

Who we are



Wayne Bergmann  
CEO



Zoe Ramsay  
Director



Rob Houston  
PLO/Director



Hayley Haas  
Senior Lawyer



Megan Highfold  
Lawyer



Julia Smith  
Junior Lawyer

# The Spear and the Shield

Our values



- Put indigenous clients in the best possible position
- Minimise negative impacts
- Maximise benefits
- Do all of this in a culturally appropriate way

This underpins everything KRED Legal does

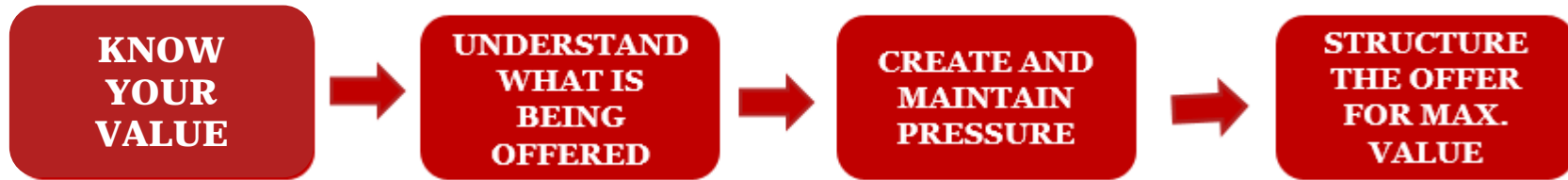
# What we are good at



- Landmark native title agreements
- UN recognition
- Heritage protection
- Extensive and diverse expertise
- Economic development

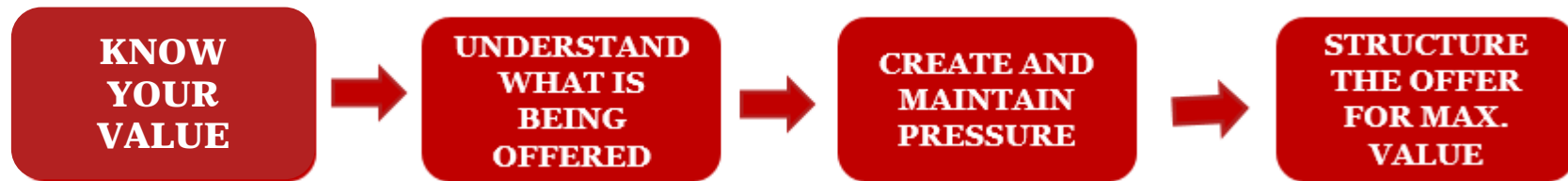
Regional and interstate - opportunities towards national benchmarking

# Getting the best deal



- Traditional rules
- SWOT
- Interests
- Costs
- Consequences

# Getting the best deal



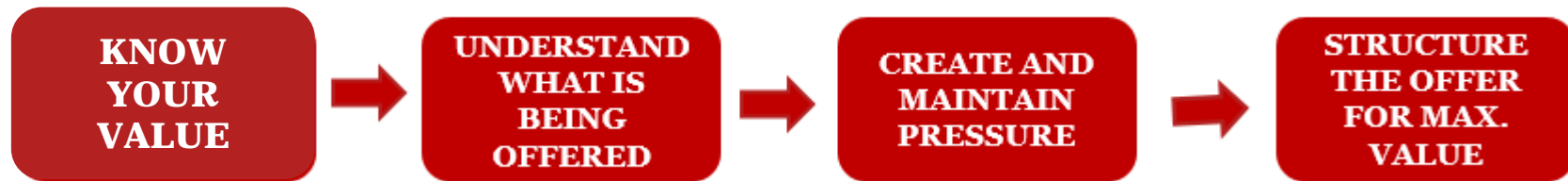
- Value
- Impacts
- Improvement – immediate and significant or incremental?

# Getting the best deal





# Getting the best deal



- Commercial terms
- Environmental provisions
- Heritage protection and cultural clauses
- Employment, contracting and business development
- Aboriginal social impact assessment

Q & A

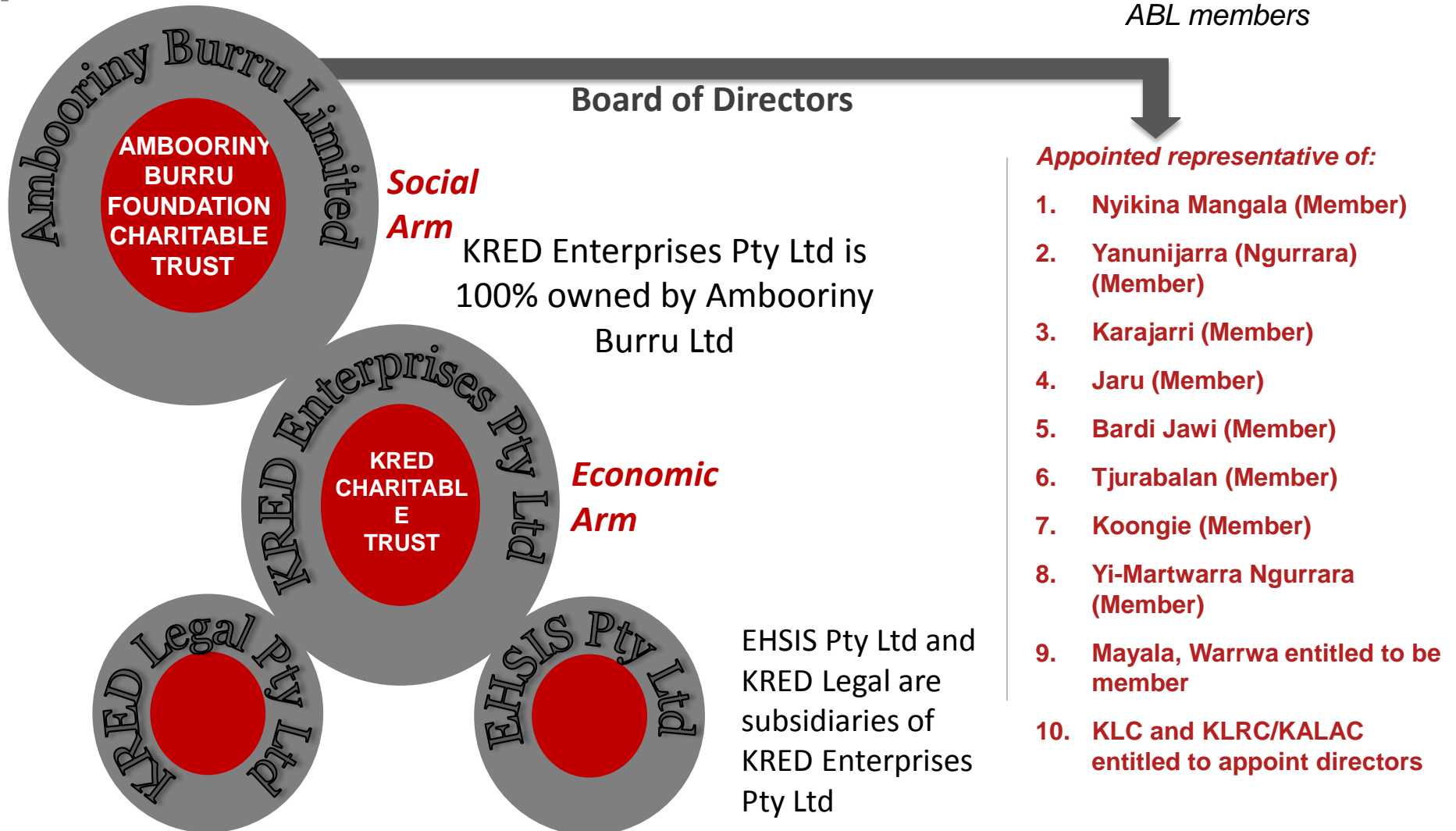
Without Prejudice and Confidential



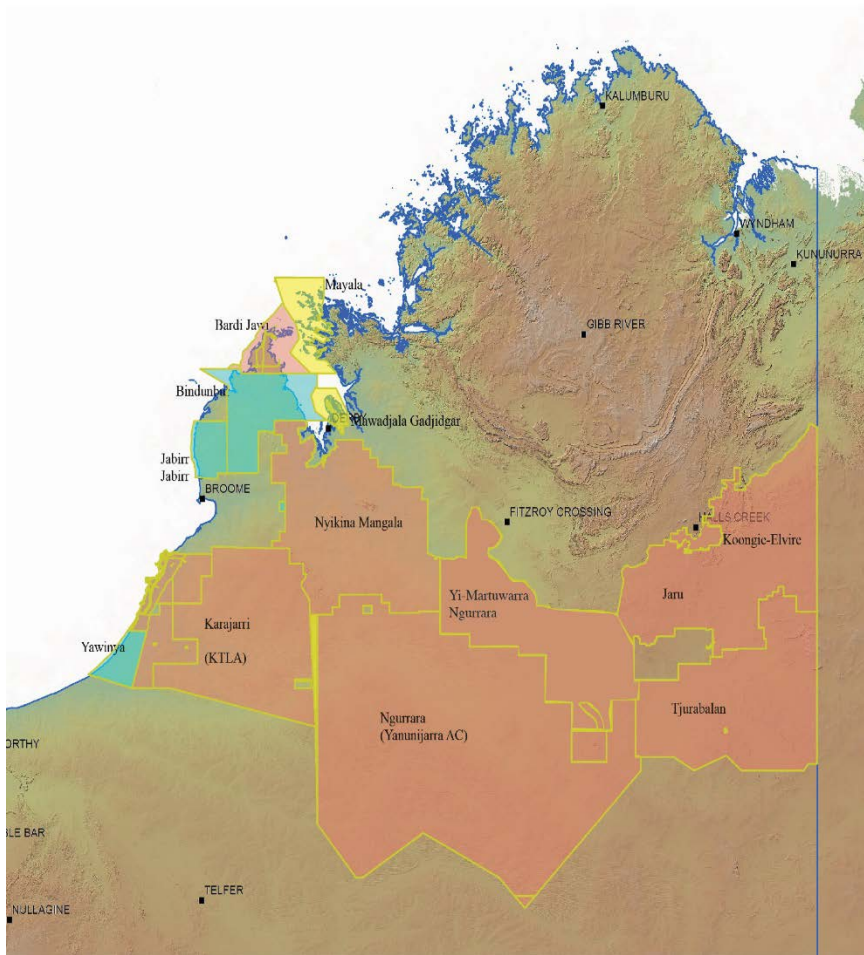
“We need to walk in two worlds where traditional law and culture stays strong -where we create our rightful place in the modern economy” Anthony Watson, Founding Chairman, KRED Enterprises

# Corporate Structure

*A condition of membership of Ambooriny Burru Ltd: contribution to regional fund for the benefit of ABL members*



# Clients and members



1. Mayala
2. Jaru
3. Yanunijarra (Ngurrara)
4. Mawadjala Gadjidgar
5. Karajarri
6. Nyikina Mangala
7. Bardi Jawi
8. Tjurabalan
9. Koongie
10. Yi-Maruwarra Ngurrara

- RED shading denotes ABL member groups
- YELLOW shading denotes native title groups in process of becoming ABL members
- AQUA shading denotes groups for which KRED Enterprises acts