

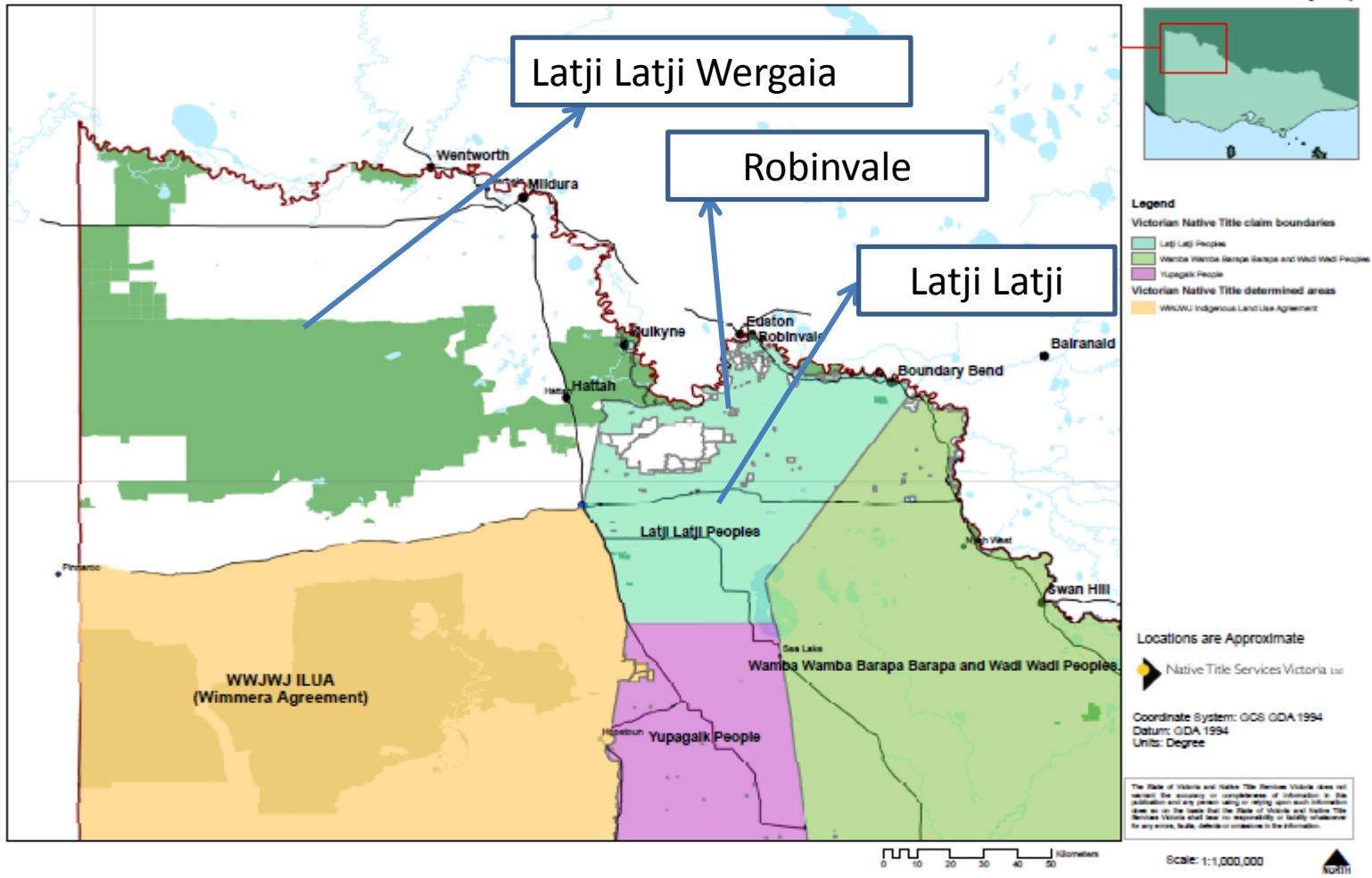
Developing good governance in North West Victoria

National Native Title Conference 3 June 2014



Native Title Services Victoria Ltd

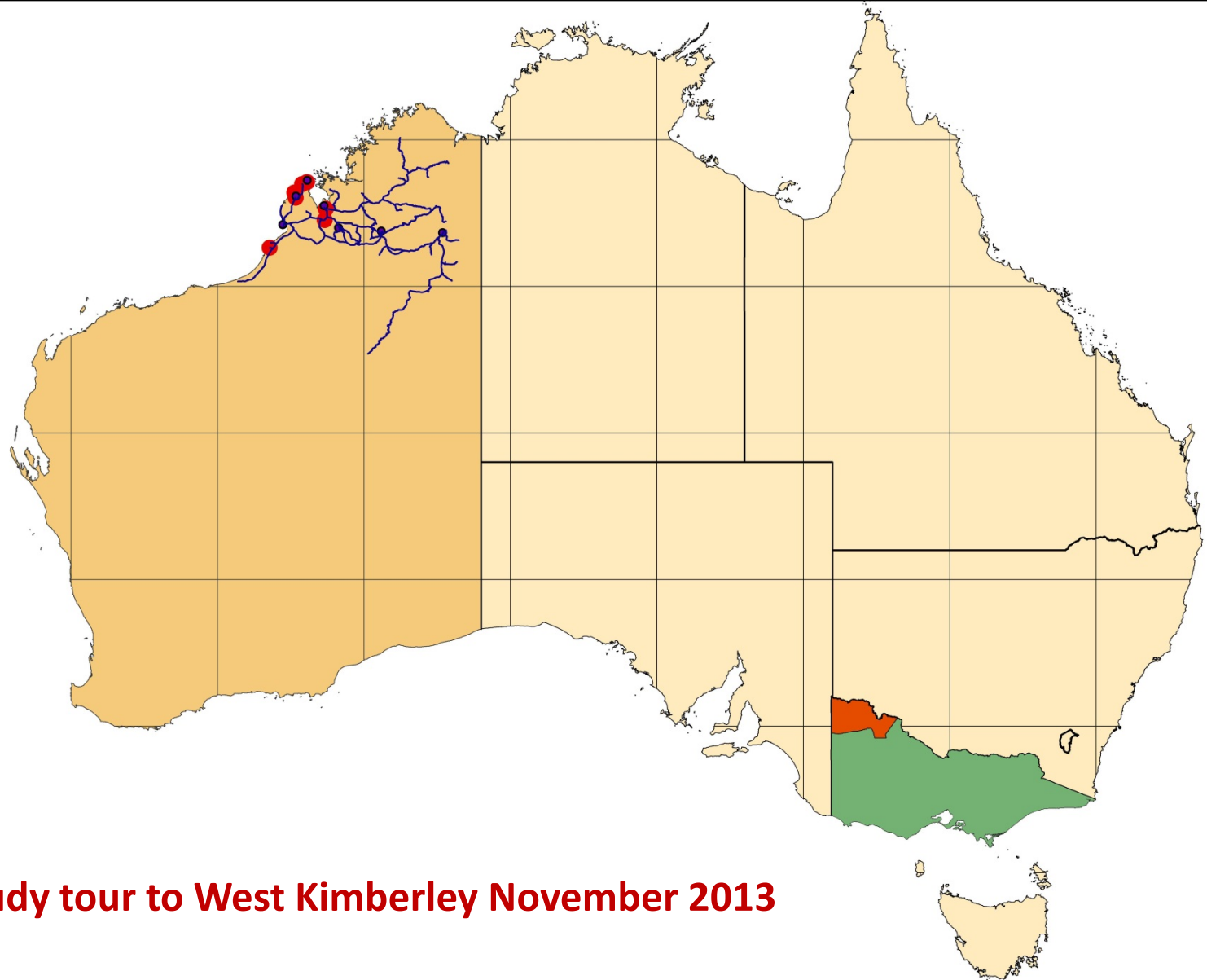
NTSV North West Assessment Research - Current claim and ILUA boundaries



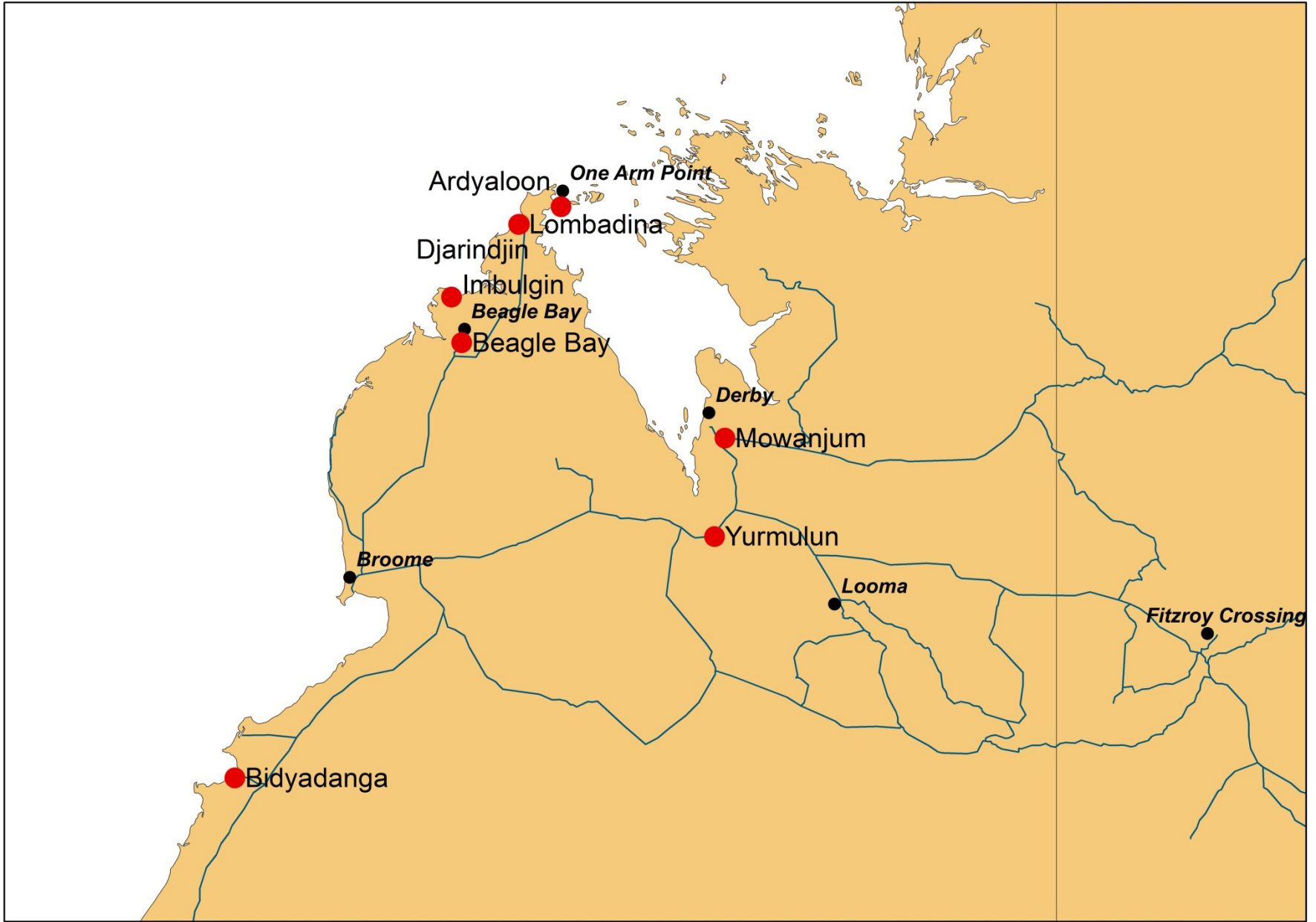
Claim history

- North West Nations: 1997 - 2001
- Latji Latji Wergaia: 2000 - 2009, claim withdrawn
- Robinvale Community: 1996 - 2012, claim withdrawn
- Latji Latji: 2000 - 2013, struck out
- Wotjobaluk: consent determination 2005, very small parcels of land where native title exists
- Wadi Wamba Barapa: 2000 – claim still on foot, NTSV has withdrawn support





Study tour to West Kimberley November 2013



Communities & Organisations visited

Communities

- Beagle Bay
- Lombadina
- Djarridjin
- Ardyaloon
- Imbulgin
- Yurmulun
- Mowanjum

Organisations

- Waardi Limited
- Yawuru Corporation
- Kimberley Regional Economic Development (KRED)
- Kimberley Land Council
- Karajarri PBC
- Bunuba PBC























Developing a corporation for North West Vic

- As part of the *Traditional Owner Settlement Act*, a traditional owner group must demonstrate to the State it has the capacity to negotiate a settlement.
- Incorporation builds capacity to:
 - engage in a process of negotiation; and
 - implement the outcomes of such a settlement
- Group composition
- RAP application



Developing a corporation for North West Vic

- Corporate structure
 - Start simple, add complexity when needed
- Membership
 - explored limited membership
- Board structure
 - Representative
 - Skills based
- Communication and engagement with broader group

