



Kimberley Land Council

Cultural Enterprise Initiative







From little things big things grow

1998

First Projects
Paruku IPA,
fire trips into
desert and
Freshwater
Fish research
NHT Funded

2006

First Ranger
Group started
with North
Australian
Turtle and
Dugong
project
funding

2009

KLC establishes
Kimberley
Ranger Program
in partnership
with ILC and
Australian
Government

2010

KLC focus on
ranger network
and
consultations
for IPAs in full
swing

2011

Kimberley
National
Heritage
Listing with
consent of
Traditional
Owners

2012

International
engagement
with aim of
establishing a
Knowledge
Bank – House
of ideas

2013

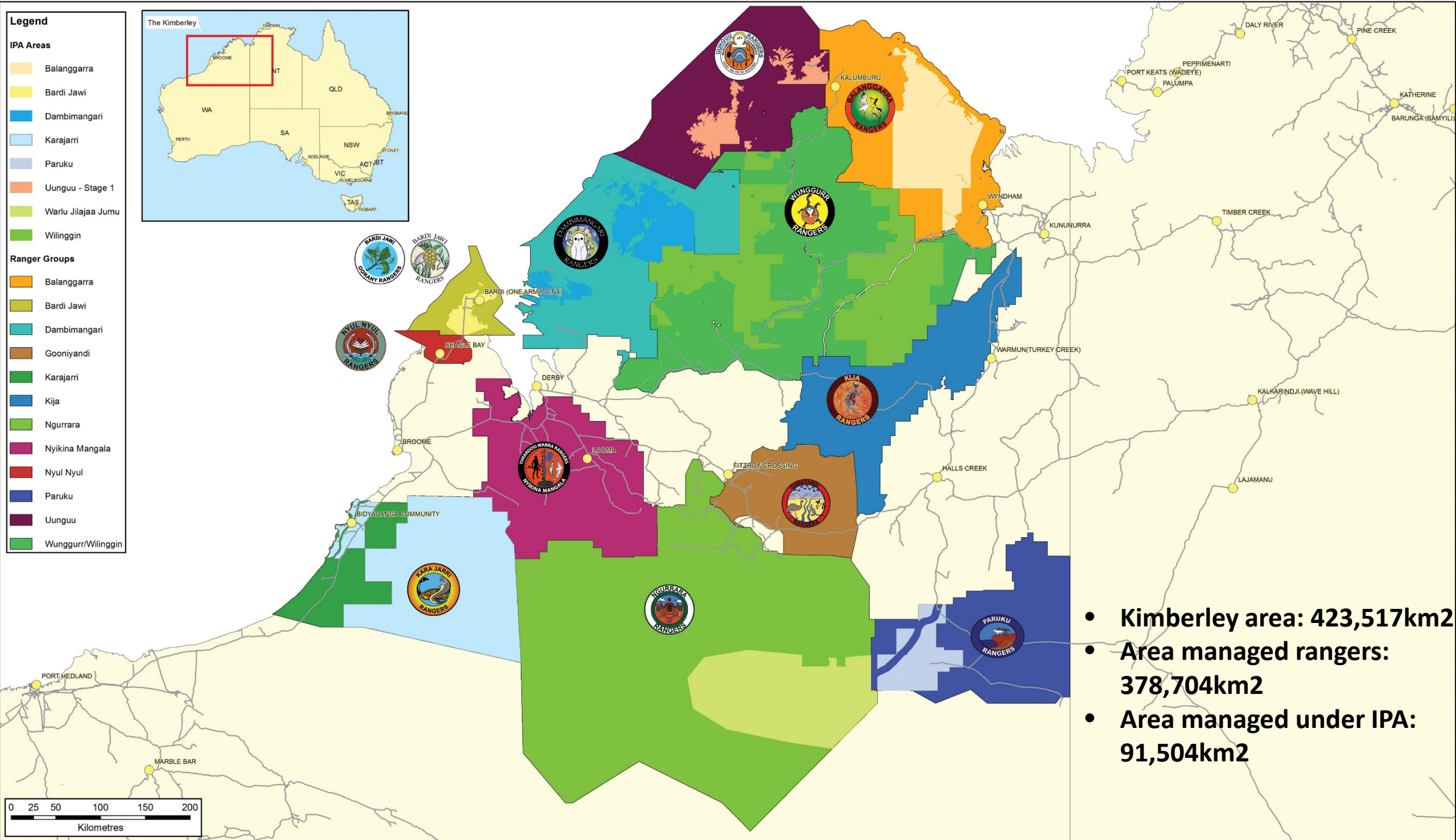
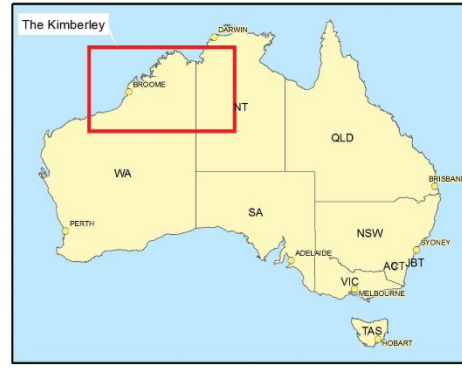
Secure \$50
million over
5 years to
support
Kimberley
CNRM

2015

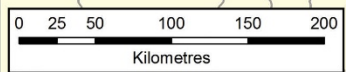
Diversify the
income
stream and
create
sustainable
financing
mechanisms
for CNRM



- Legend**
- IPA Areas**
- Balanggarra
 - Bardi Jawi
 - Dambimangari
 - Karajarri
 - Paruku
 - Uunguu - Stage 1
 - Warlu Jilajaa Jumu
 - Wilinggin
- Ranger Groups**
- Balanggarra
 - Bardi Jawi
 - Dambimangari
 - Goonyandi
 - Karajarri
 - Kija
 - Ngurrara
 - Nyikina Mangala
 - Nyul Nyul
 - Paruku
 - Uunguu
 - Wungurr/Wilinggin



- Kimberley area: 423,517km²
- Area managed rangers: 378,704km²
- Area managed under IPA: 91,504km²



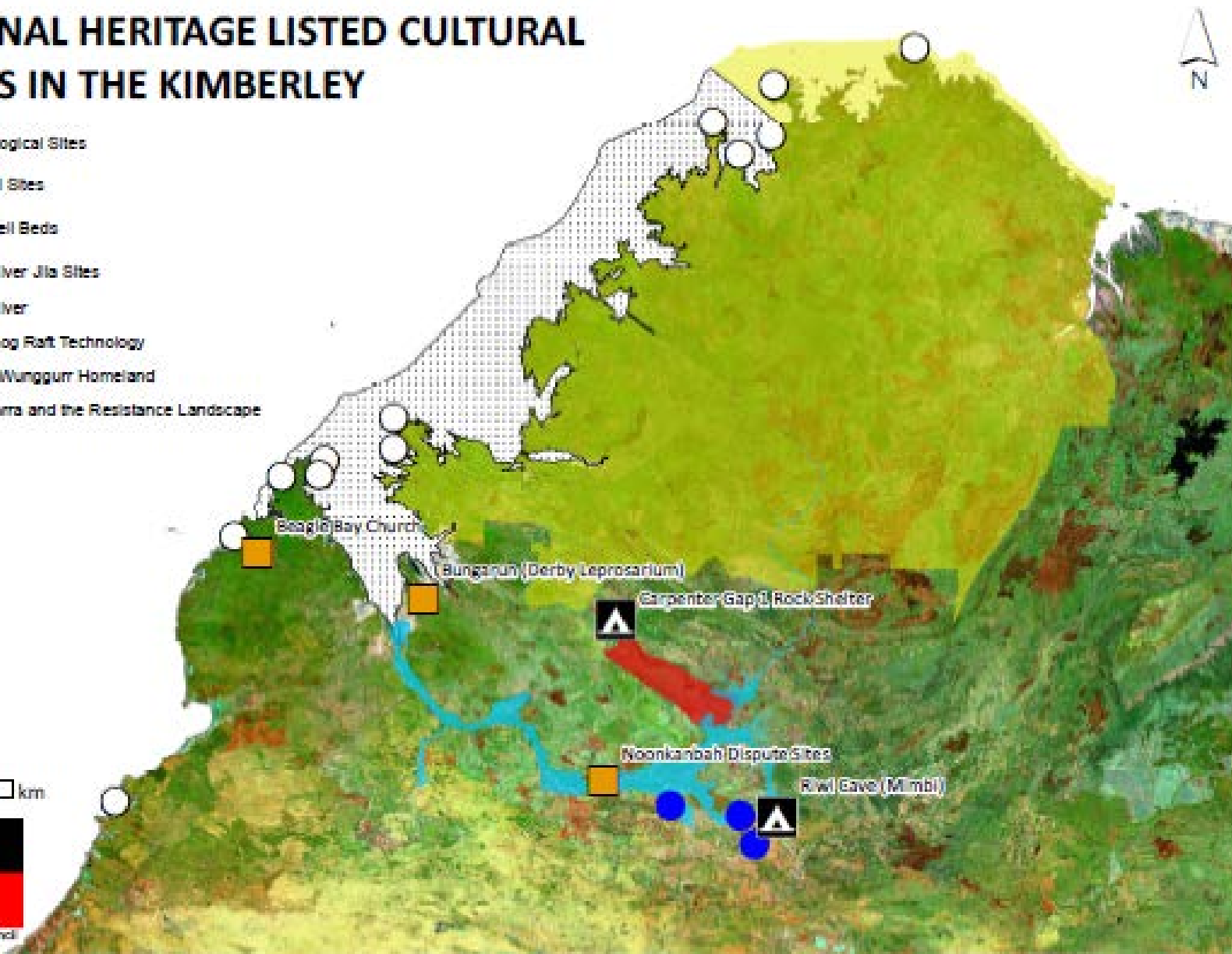
NATIONAL HERITAGE LISTED CULTURAL VALUES IN THE KIMBERLEY

-  Archaeological Sites
-  Historical Sites
-  Pearl Shell Beds
-  Fitzroy River Jila Sites
-  Fitzroy River
-  Double Log Raft Technology
-  Wanjinna-Wungurr Homeland
-  Jandamarra and the Resistance Landscape

100
km



Kimberley Local Council



KARAJARRI HEALTHY COUNTRY PLAN 2013 - 2023

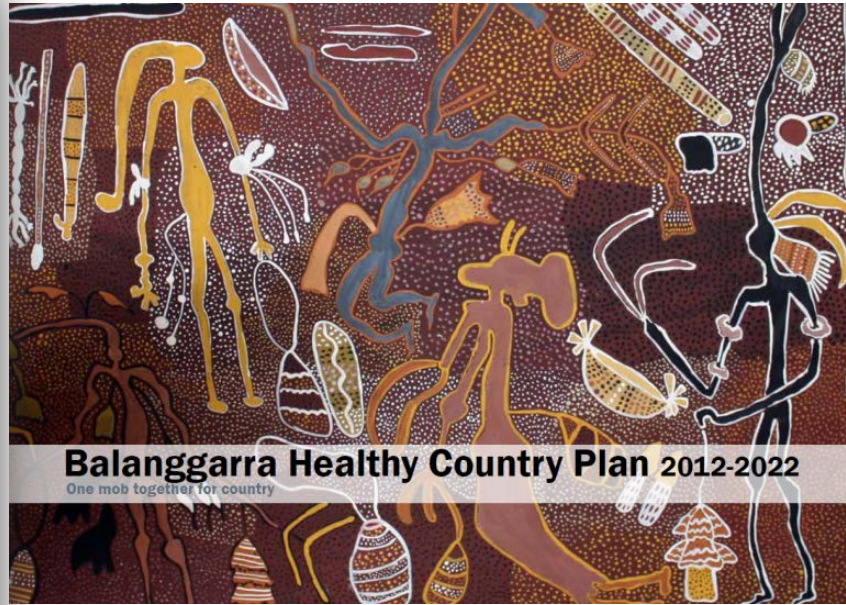
Palanapayana Tukjana Ngurra

'Everybody looking after country properly'



February 2014
KARAJARRI TRADITIONAL LANDS ASSOCIATION

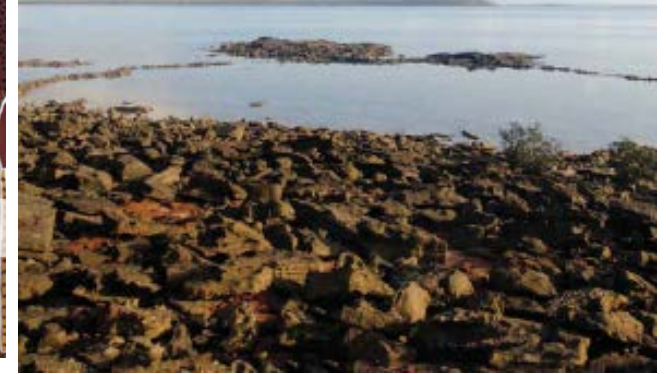
Funded by
Department of Sustainability, Environment, Water, Population and Communities (SEWPaC),
the PEW Environmental Trust and The Nature Conservancy



Balangarra Healthy Country Plan 2012-2022

One mob together for country

BARDI JAWI INDIGENOUS PROTECTED AREA MANAGEMENT PLAN 2012 - 2022



WILINGGIN HEALTHY COUNTRY PLAN

Keeping Ngarinyin People and Wilinggin Country Healthy 2012-2022



Much about this plan is traditional knowledge, keeping it strong and passing it on to the younger generation. Without the strong leadership of Ngarinyin elders past and present Ngarinyin culture would not be as strong today as it is



DAMBIMANGARI HEALTHY COUNTRY PLAN 2012-2022



Kimberley Network





SWOT Analysis of enterprise opportunities

Strengths

- **Scale – number of TO groups – we work with & size of area;**
- Ability to control access on exclusive possession native title country;
- Cultural governance - strong foundations.
- Cultural knowledge and history
- Abundance of natural resources

Challenges

- **Lack of capacity, understanding of opportunity and governance at PBC level;**
- Undermining, competing agendas and internal competition;
- Historical welfare mindset and dependency
- Managing expectations.

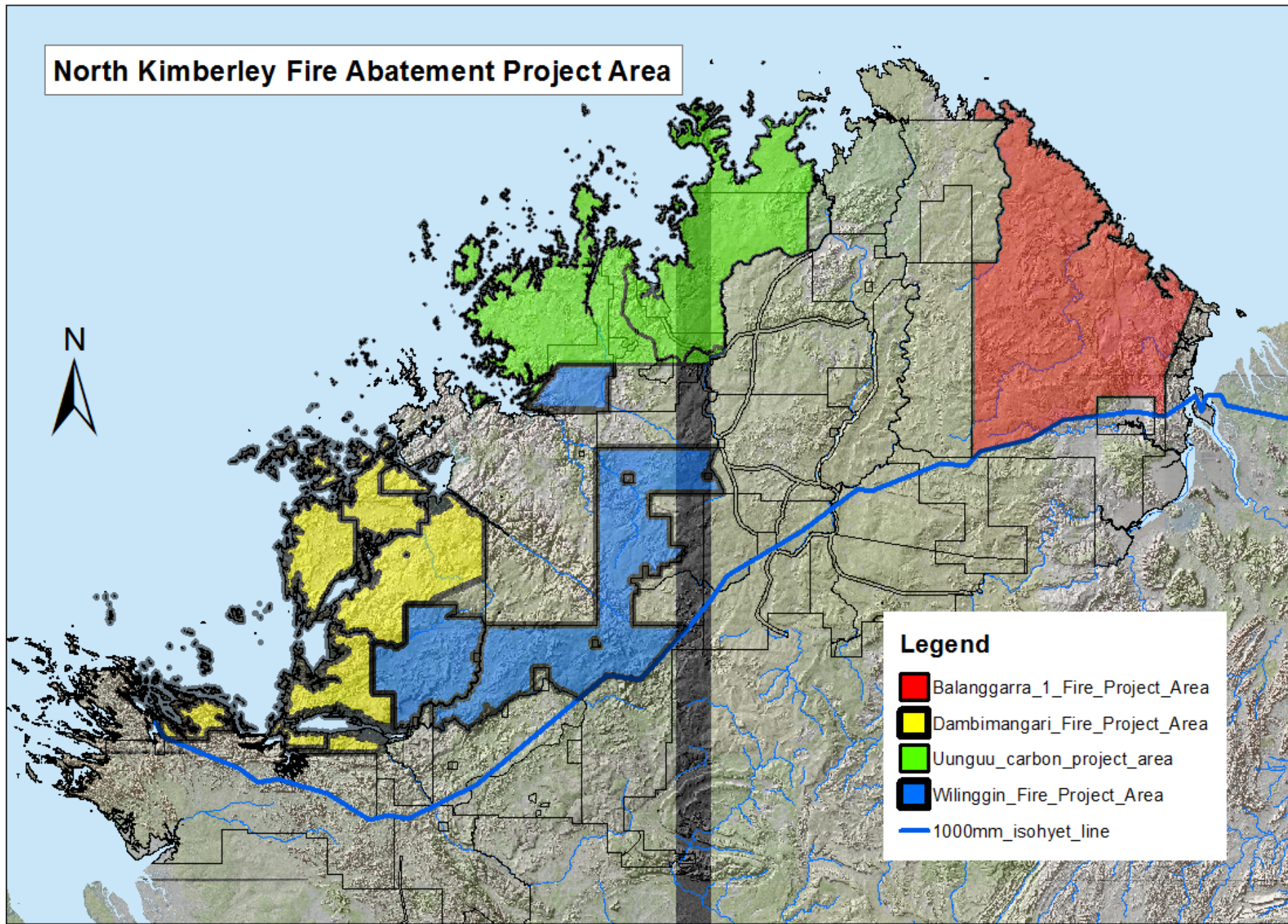
Opportunities

- Increasing demand for cultural experiences on country.
- International obligations of Australian Government: Protected Areas, Biodiversity, Greenhouse Emissions.
- Career pathways: developing people to go on to other jobs.

Threats

- **Threat to Native Title rights and interests: right to manage and undertake economic activities – Land Tenure reform.**
- Political changes.
- 3rd party funding – reliance on government, corporate or philanthropic investors who have their own priorities and targets

North Kimberley Fire Abatement Project Area







NORTH KIMBERLEY FIRE ABATEMENT PROJECT

