

The 2002 Wentworth Lecture

Unusual Couples

Relationships and Research
on the Knowledge Frontier

Presented by
Dr Peter Sutton



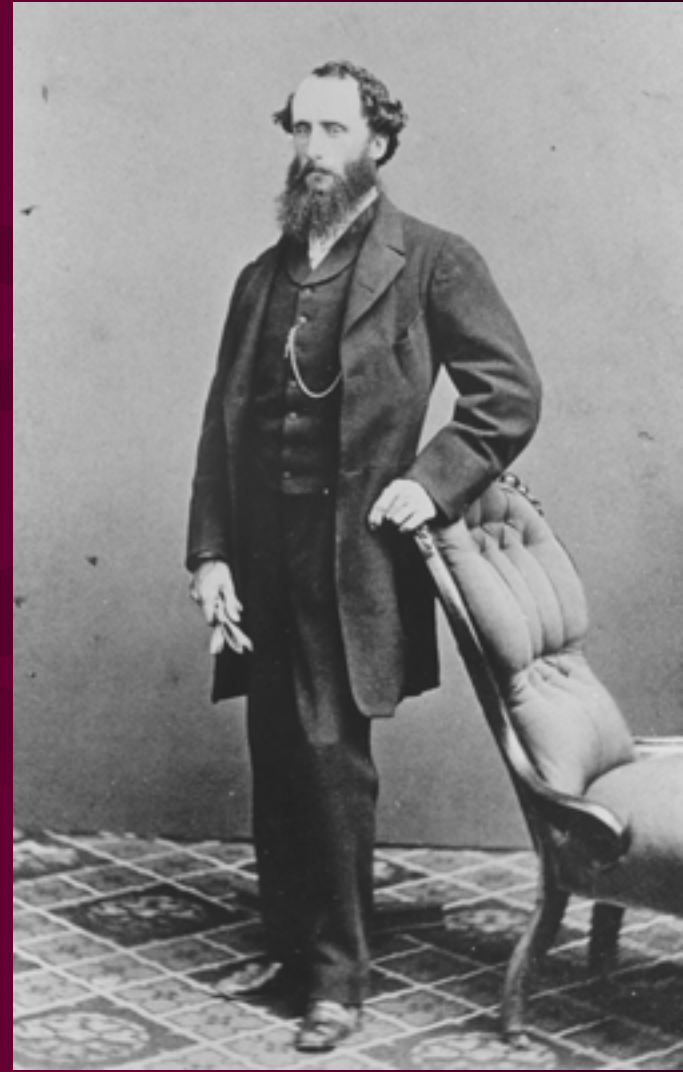
Biraban (John M'Gill)
1839



Reverend Lancelot E. Threlkeld
c. 1815



Tulaba



A.W. Howitt



Makarrwarla



W. Lloyd Warner



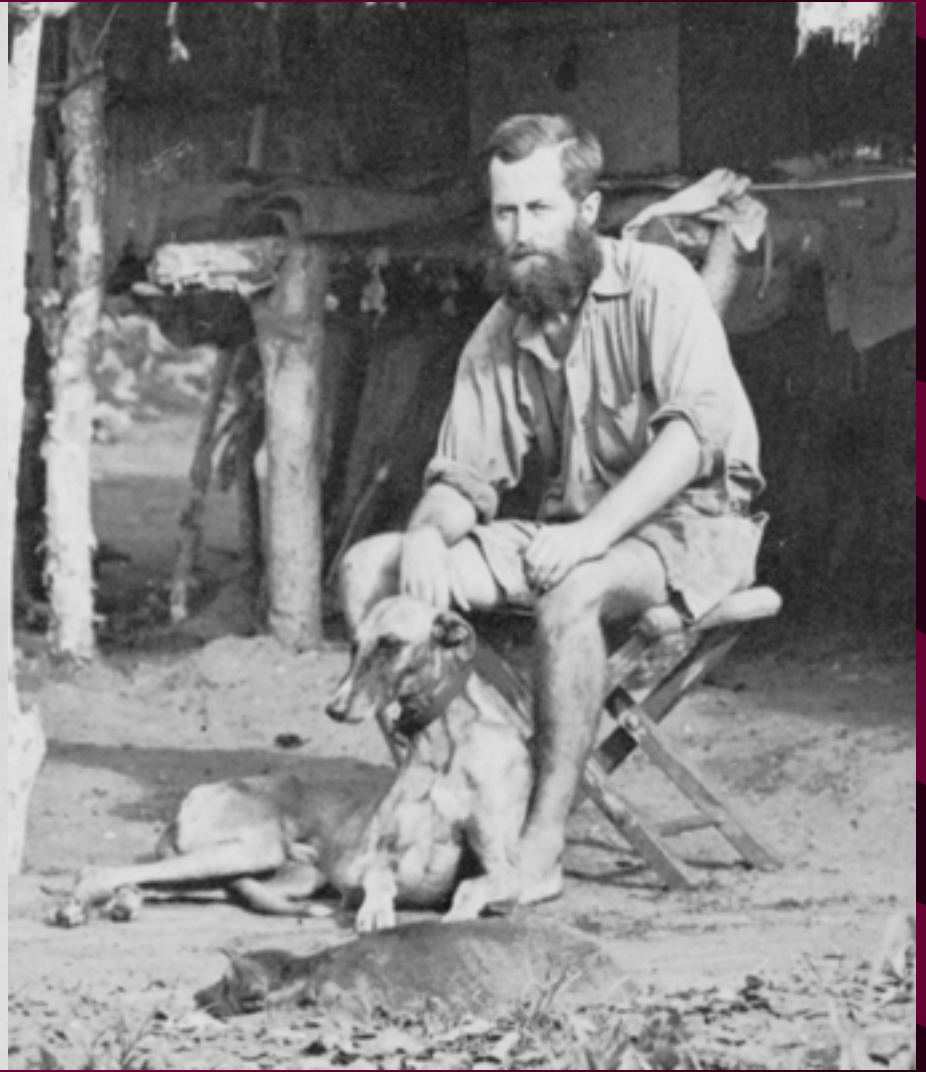
Billy Mammus



Ursula McConnel



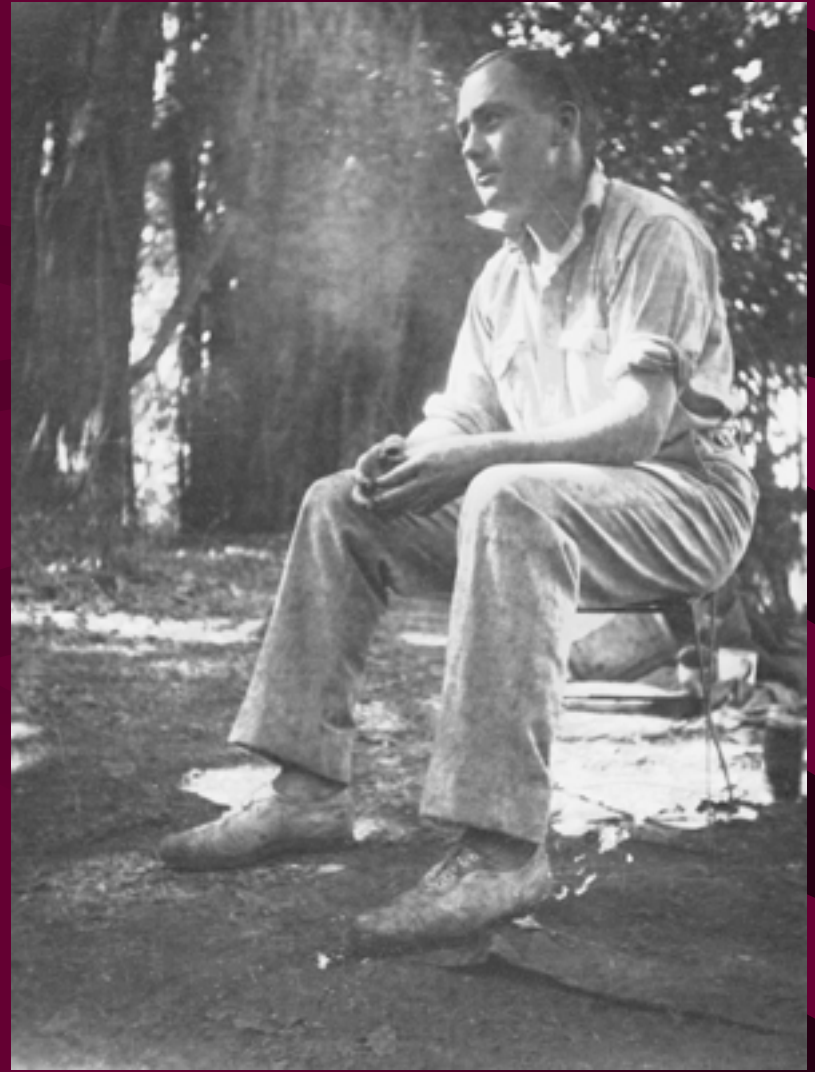
Raiwalla



Donald Thomson



Durmugam



W.E.H. Stanner



Lazarus Lamilami



Ronald Berndt



Mick McLean & Luise Hercus



Ellen Campbell Atkinson



Dianne Barwick



Peret Arkwookerum



John von Sturmer



Topsy Nelson Napurrula & Diane Bell

Acknowledgments and Credits

Images for this presentation were sourced from the following pictorial collections held at the Australian Institute of Aboriginal and Torres Strait Islander Studies:

Aldo Massola; W.F. and G. Mackenzie; W.E.H. Stanner; Doug A. Peterson; Isobel White; Diane Barwick; Alick Jackomos; John von Sturmer; Athol Chase.

Images were also sourced from the following publications:

Thomson, D. *Donald Thomson in Arnhem Land*, Currey O'Neil, 1983

White, I. et al eds. *Fighters and Singers*, George Allen & Unwin, 1985

Gunson, N. ed. *Australian Reminiscences & Papers of L.E. Threlkeld*, AIAS, 1974

The 2002 Wentworth Lecture

Unusual Couples

Relationships and Research
on the Knowledge Frontier

Presented by
Dr Peter Sutton