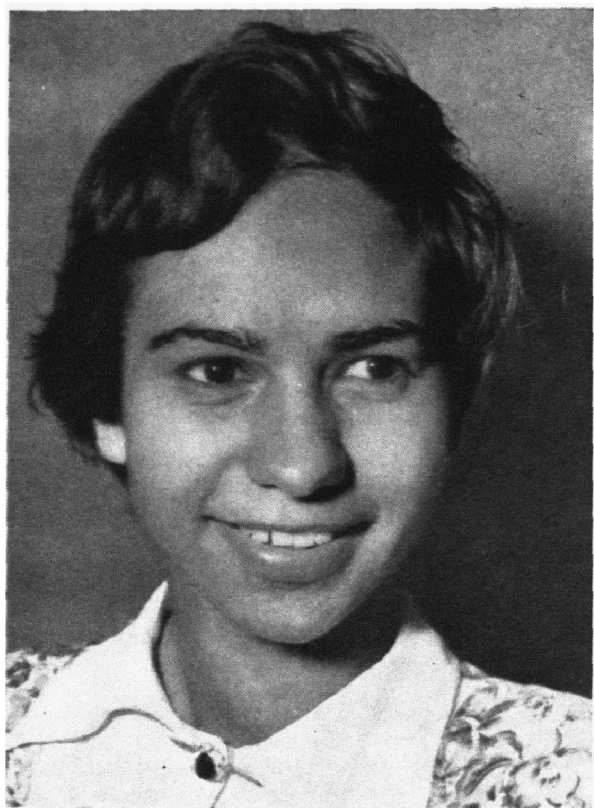


# HOME



# HINTS

**T**HE provision of so many clean, modern homes on Aboriginal Stations throughout the State, opens up a new world for the aboriginal woman of to-day. She can now enjoy the same amenities, the same comforts, and the same pleasures as her white sister. From the dirt floor of a bark gunyah to the polished linoleum of a modern hygienic cottage, is a big step for many aboriginal women to take, a frightening step, perhaps, but, with the patient and ever ready help of Station Managers and Matrons, she will find it is not a difficult one after all. She will realise, that as the schools are educating her children to the cleaner and better ways of life, and teaching them various arts and crafts, she must play her part by providing that home environment that is so necessary to the welfare of those children.

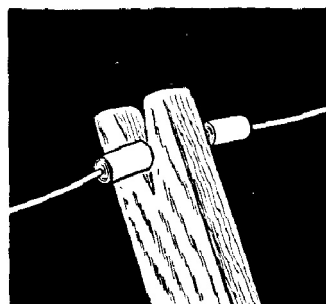


Evelyn Robinson, brilliant aboriginal scholar, has just completed the first year of her two-year course at the Teachers' College.

Evelyn, who is having her advanced education sponsored by the Aborigine Welfare Board, was an outstanding scholar at Grafton High School.

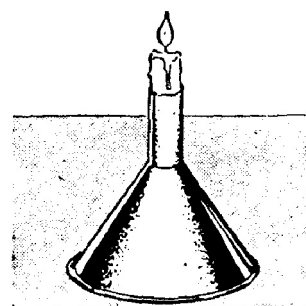
When she has completed her course at the Teacher's College, she will take up an appointment as an Educational Officer for the Board.

Her father is a Police tracker at Grafton.

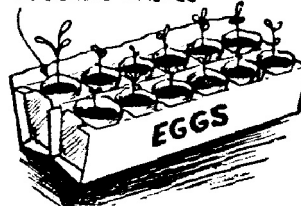


Clothes-line props can be kept from sliding or falling by wrapping some adhesive or insulation tape around the line on both sides of the props.

An old metal funnel is just the thing to make a good candlestick that will not tip over. Taper the bottom of the candle and then press it down into the end of the funnel spout.



EGGSHELL HALVES



To start seedlings for your garden, try using egg-shell halves filled with loam, as individual flowerpots. The shells can be stored in little boxes and moved from place to place. Later, they can be transplanted just as they are and the shells will rot away.